

Уральское Бюро Международного Научного Туризма

Ural Bureau of the International Scientific Tourism

Address: office 129a, 100 Amundsen st., Ekaterinburg, Russia

Phone: +7 (343) 267 89 45, +7 (343) 260 93 83

e-mail: ubist@r66.ru

License ТД № 0006619

Certificate РОСС.RU.Y009.MO0246 №0007789

Northern Ural.

Our Bureau offer 21-days excursion for collectors to unique area Ural Mountains – Ural gemstone belt.

1 day

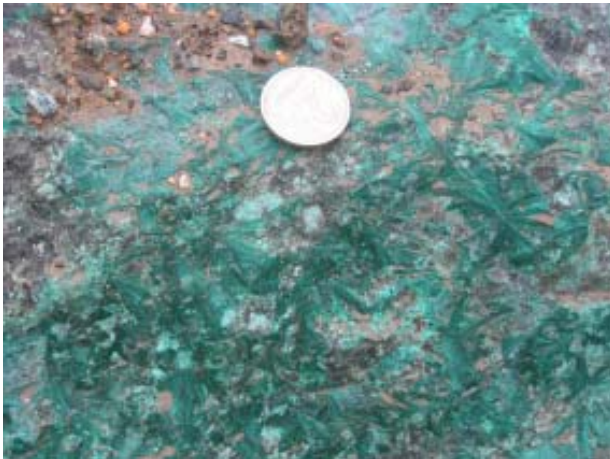
Arrival to Yekaterinburg. Accommodation in hotel.

2 day

Crossing to Nizhni Tagil city (130 km). Excursion to Visokogorski copper quarry (malachite, star-like malachite, azurite). Crossing to Sarana (180 km.). Spending the night in tents on coast Vighai river.



Yekaterinburg.



Visokogorski quarry. Star-like malachite.



Visokogorski quarry.



Visokogorski quarry. Malachite..



Road to Sarana.

3 day

Excursion to Sarana chromite mine and ore store (uvarovite). Excursion to chromite quarry near mine.

4 day

Crossing Sarana - Gornozavodsk - Gremiachinsk - Kizel - Berezniki - Solikamsk - Krasnovishersk (380 km.). Spending the night in tents on coast Vishera river.



Zarechni. Mineralogical museum.



Entrance to Sarana town.



The beginning of road in Europe from Asia.



Road to Krasnovishersk. Solikamsk. old church.



Sarana chromite mine. Ore store.



Landscape near road to Krasnovishersk.



Chromite quarry near mine.

5 day

Crossing Krasnovishersk - Vaia (100 km). Beginning of rafting on Vishera river by double-boats or canoe for two. Length of rafting is 120 km. Tourists are ensured life vest, local guide-instructor.



Road to Krasnovishersk.



The map of road from Sarana town to Krasnovishersk city (385 km.)



About Vishera river.

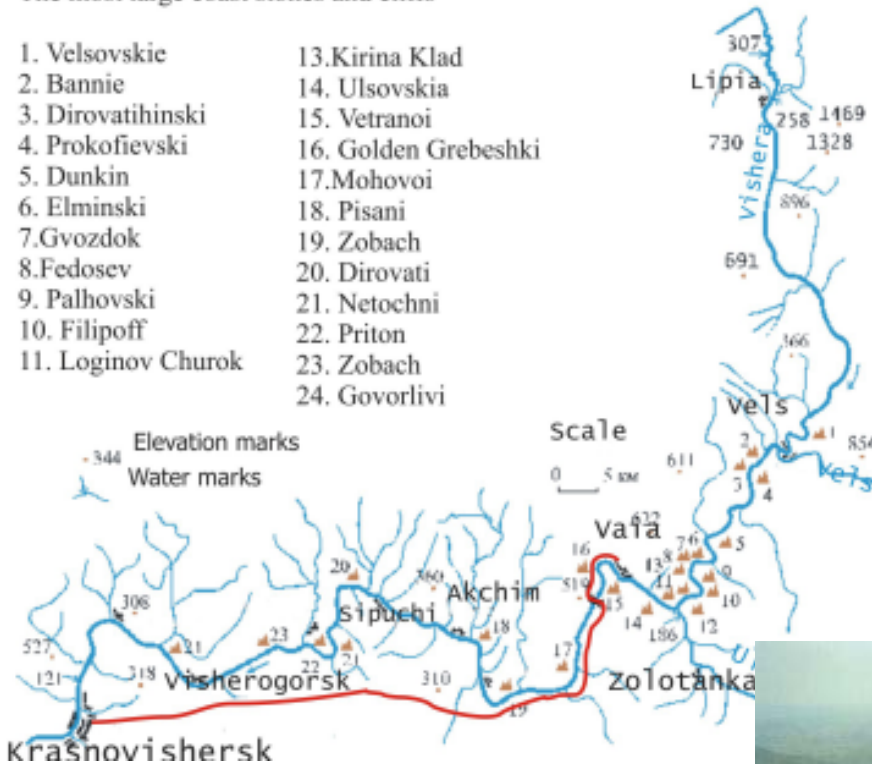
The Vishera river is a beautiful river of the North Ural. It length is 415 km, and the square of a water withdrawal is 31200 sq. km. The water of the river is very clear. The coasts frame quaint rock, which come across along flowing of the river. The river is winding with many sandbanks. The river basin are composed of limestones, mainly, which its are exposed of karst processes. Therefore, tourists will meet with caverns, grottos and dips for the rafting, and they will meet with many beautiful islands with rock coasts and fishing.



Double-boat on Vishera river.

The most large coast stones and cliffs

- | | |
|--------------------|----------------------|
| 1. Velsovskie | 13. Kirina Klad |
| 2. Bannie | 14. Ulsovskia |
| 3. Dirovatihinski | 15. Vetranoi |
| 4. Prokofievski | 16. Golden Grebeshki |
| 5. Dunkin | 17. Mohovoi |
| 6. Elminski | 18. Pisani |
| 7. Gvozdok | 19. Zobach |
| 8. Fedosev | 20. Dirovati |
| 9. Palhovski | 21. Netochni |
| 10. Filipoff | 22. Priton |
| 11. Loginov Churok | 23. Zobach |
| | 24. Govorlivi |



The map of Vishera river and road Krasnovishersk - Vaia (red color).



One of inflow Vishera river.

During crossing Krasnovishersk - Vaia tourists visit Pomianenni stone. Pomianenni stone - one of spur of Polud mountain range with quaint form of relief. Superstition say that force of the Stone help change your life in the best side.

Sights of the rafting.

- Fishing;
- Excursion by foot (4 km) to place where Big Waia river (inflow of Vishera river) pulling up under ground and flowing to Vishera river;
- Stones: Golden grebeshki, Goloskviski Churok, Gostinovski, Boez, Jabrus, Ghabkin Mis, Mohovoi;
- Near Stone Mohovoi may make stopping place and look some caverns. Near foot of the Stone locate big area for tents. On the Stone are preserved pictures paleolithic Age made red paint.*
- Stones: Griva, Kosoturiha, Lisaja, Bezimjanni, Pisani;



Pomianenni stone.



Pomianenni stone in winter.

Stone Pisani - series rocks lenght 3 km and hight 60-70 m. The stone consist some caverns and grottos with sacrificial place Iron Age. The name the Stone recieved for many picters on the rocks. Near the Stone there is very deep-water place with beautiful fishing. The Stone are composed of limestone and in the Stone may find fossils see fauna.

- Stones: Bichok, Gremiachev, Sipuchi village, mountain Sipuchi.

The mountain are composed dark-gray sandstone broken on small stove. The sandstone easily break up from small pressure and small stove rolling down to foot of the Stone with buzzing one's ears.

- Islands: Lugumovskije, stones: Stolbi, Priton, Istochhni, Green Birch, Govorlivi.



Stone Mohovoi.



Stone Pisani. Veiw of Vishera river.



The Stone Stolbi.



Paleolithic Age pictures on Stone Pisani.



The Stone Govorlivi.



The Stone Govolivi. Near the Stone are located Sviato-troitskaja curch (1832 year bilding).

Near Stone there is very strong echo.

- Stones: Kedrovi, Vetlan.

- Excursion to Polud mountain (529 m)

6 day - 11 day

Rafting on Vishera river.

12 day

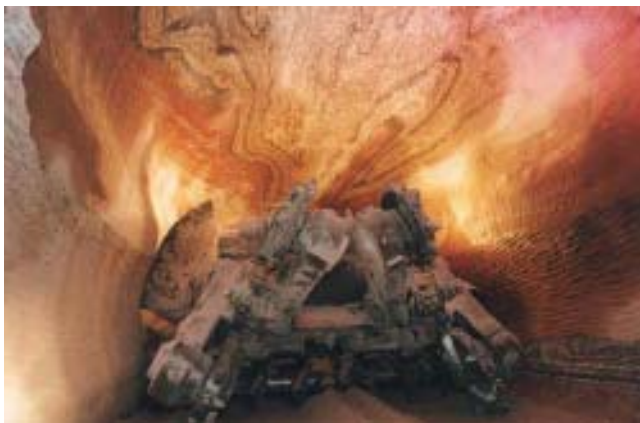
Crossing to diamond drag of diamond placer deposit (50 km). Excursion to heaps of the deposit. Standing the night in tents.

13 day

Crossing to Berezniki city (130 km). Excursion to sylvinite gallery.



The Stone Vetlan.



Driving in sylvinite gallery.



Veiw from Vetlan..



Visherski diamond placer deposit. Diamond drag.



Vishera river from Stone Vetlan.



Polud mountain.



The road to Vetlan mountain.

14day

Crossing to Kungur city (250 km). Spending to night in tents on coast Silva river. Excursion to Kungur ice cavern.

15 day

Crossing to Krasni Jasil village (80 km)
Excursion to satin-spar deposit. Crossing to Yekaterinburg (250 km)

16 day - 20 day

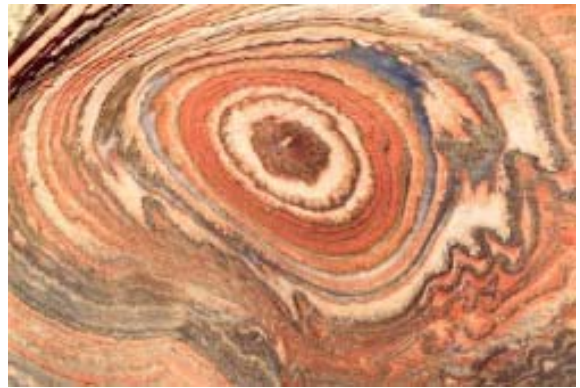
Excursion to Mariinskoje emerald deposit. Excursion to mineralogical museums. Excursion to Berezovsk gold deposit. Legalization of permissions for export from Russia collections of minerals.

21 day

Departure from Yekaterinburg.

Total parameters.

Total distance is 3200 km. For group 7 tourists the cost excursions is 1430 euro for 1 tourist.



Berezniki. Design of sylvinite.



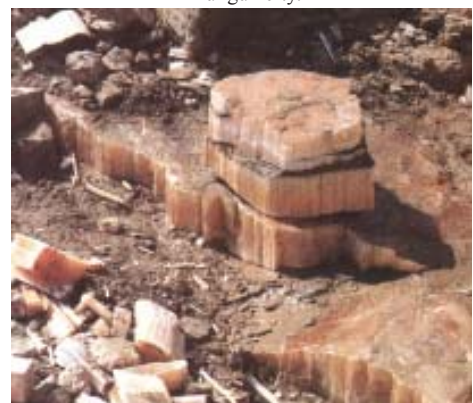
Berezniki. Design of sylvinite.



Kungur ice cavern.



Kungur city.



Krasni Jasil Satin-spar.